

Q150A-CK Conversion Kit

The kit includes:

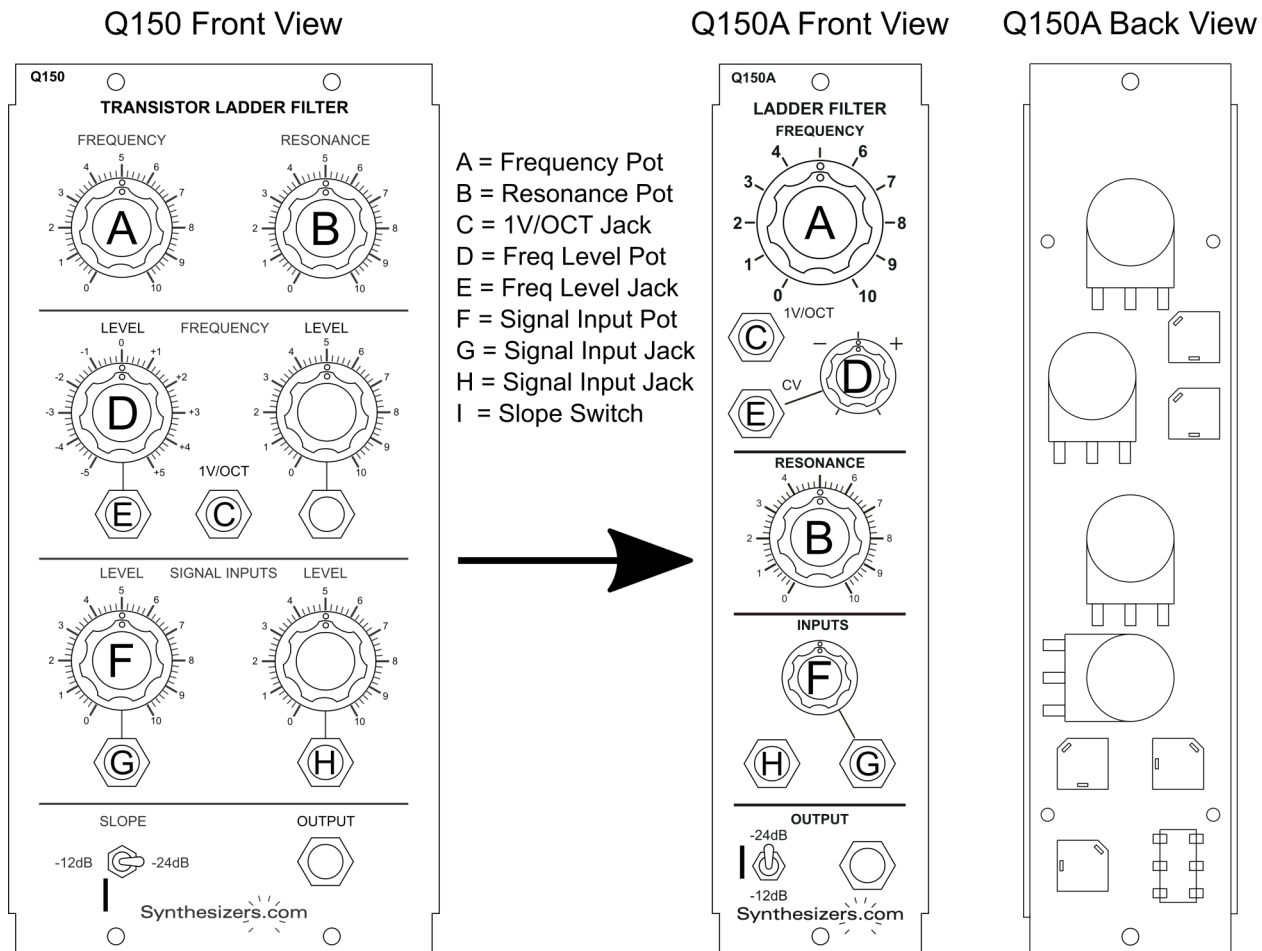
- (1) Q150A Panel
- (4) Spacers (pre-installed on panel)
- (3) Knobs
- (1) Jack (pre-installed on panel)
- (2) PCB Jumpers

Tools required:

- Small flat-head screwdriver
- Phillips screwdriver
- Pliers (or nutdrivers)

The components to remove are marked on the drawing below.

Note the orientation of the parts when installed on the Q150A panel.



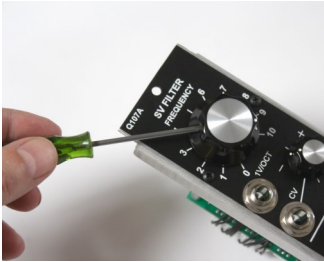
Q150A-CK Conversion Kit

Start by removing the PCB Board.

- Optional: Mark the connectors before removing from the board.
- Unscrew the PCB from the spacers.
- Remove the connectors from the PCB.
- Set aside.

Disassembling the Q150

Remove the necessary knobs using the small flat head screw driver.



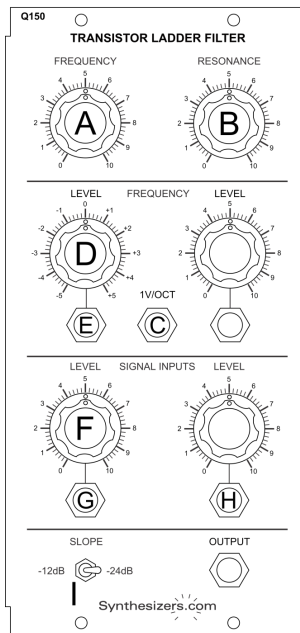
There is no need to remove the spacers from the panel. New spacers have been provided.

Remove the components using the pliers or nutdriver.

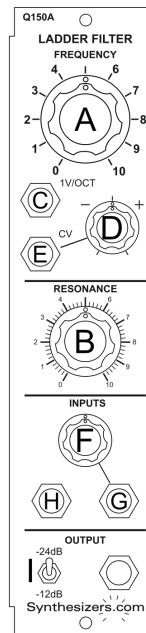


Note that the Pot, Jack, and Switch hardware is different.

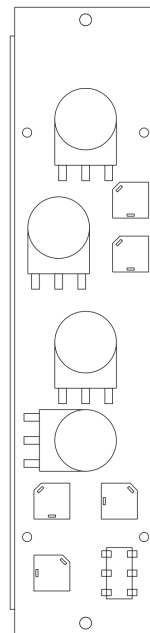
Q150 Front View



Q150A Front View



Q150A Back View



- A = Frequency Pot
 B = Resonance Pot
 C = 1V/OCT Jack
 D = Freq Level Pot
 E = Freq Level Jack
 F = Signal Input Pot
 G = Signal Input Jack
 H = Signal Input Jack
 I = Slope Switch

Q150A-CK Conversion Kit

Assembling the Q150A panel

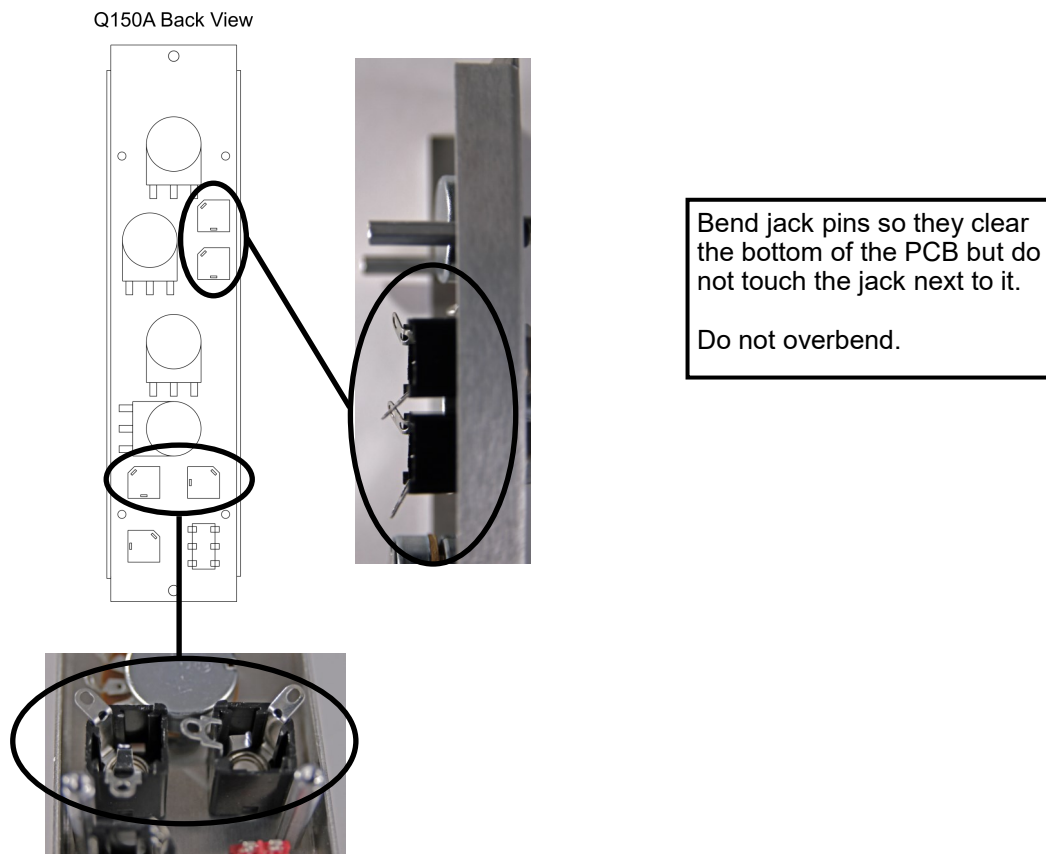
IMPORTANT

Pay close attention to component notes and component orientation.

Assemble the components according to the drawings on Page 1.

The parts **MUST** be oriented according to the drawing to prevent shorting.

IMPORTANT — Bend the pins on the circled jacks to prevent them from shorting on the board.



Q150A-CK Conversion Kit

Assembling the Q150A panel

IMPORTANT
Pay close attention to jumper locations.

Once all components are installed, reconnect the PCB board according to the diagram below.

